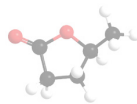
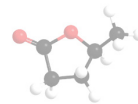


Name : _____ Date : _____



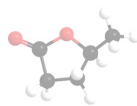
Introduction to Bonding Worksheet



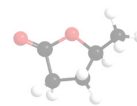
Mark each of the following statements as a property of covalent bonding (C), ionic bonding (I), or metallic bonding (M).

1. Electrons are shared among constituent elements. _____
2. Electrons are transferred from one element to another. _____
3. Electrons are delocalized. _____
4. The solid form is a crystal lattice. _____
5. The compound is a great conductor of electricity in a liquid form. _____
6. The compound is malleable and ductile when solid. _____
7. The compound melts/boils at very high temperatures. _____
8. The compound is hard to crush or break when solid. _____
9. The compound is lustrous as a solid. _____
10. The compound is volatile as a liquid or a gas. _____
11. The compound does not conduct electricity in any state of matter. _____
12. Only non-metals take part in this type of bond. _____
13. Generally, a metal and a non-metal will form this bond. _____

Name : _____ Date : _____



Introduction to Bonding Worksheet



Mark each of the following statements as a property of covalent bonding (C), ionic bonding (I), or metallic bonding (M).

1. Electrons are shared among constituent elements. C
2. Electrons are transferred from one element to another. I
3. Electrons are delocalized. M
4. The solid form is a crystal lattice. I
5. The compound is a great conductor of electricity in a liquid form. I
6. The compound is malleable and ductile when solid. M
7. The compound melts/boils at very high temperatures. I
8. The compound is hard to crush or break when solid. I
9. The compound is lustrous as a solid. M
10. The compound is volatile as a liquid or a gas. M
11. The compound does not conduct electricity in any state of matter. C
12. Only non-metals take part in this type of bond. C
13. Generally, a metal and a non-metal will form this bond. I